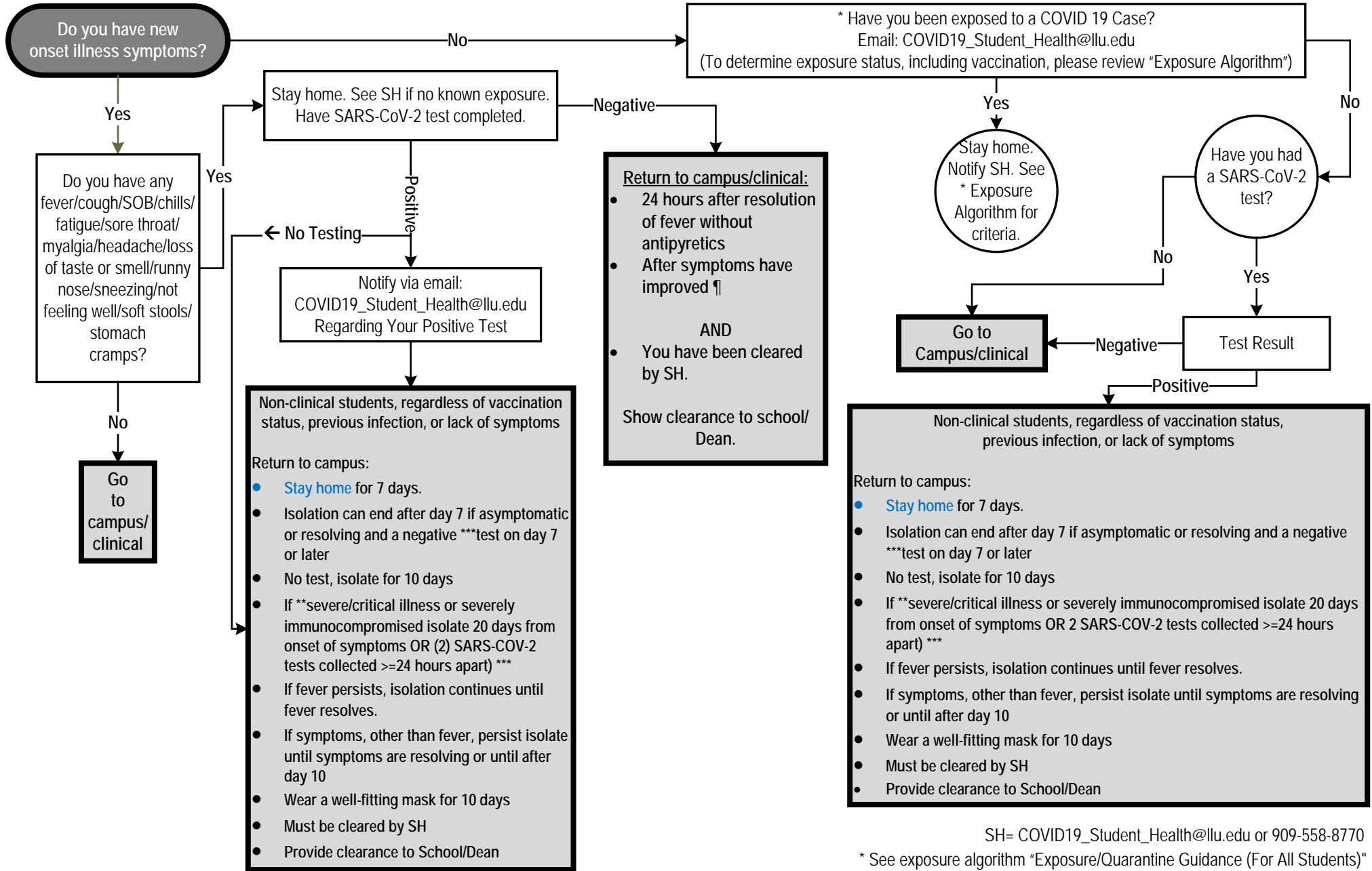


NON-CLINICAL STUDENTS
LLU STUDENT RETURN-TO-CAMPUS CRITERIA – UPDATED FEBRUARY 3, 2022 (vs. 3.1)
SYMPTOMS, EXPOSURES & TESTING



Non-clinical students, regardless of vaccination status, previous infection, or lack of symptoms

Return to campus:

- Stay home for 7 days.
- Isolation can end after day 7 if asymptomatic or resolving and a negative ***test on day 7 or later
- No test, isolate for 10 days
- If **severe/critical illness or severely immunocompromised isolate 20 days from onset of symptoms OR (2) SARS-COV-2 tests collected >=24 hours apart) ***
- If fever persists, isolation continues until fever resolves.
- If symptoms, other than fever, persist isolate until symptoms are resolving or until after day 10
- Wear a well-fitting mask for 10 days
- Must be cleared by SH
- Provide clearance to School/Dean

Return to campus/clinical:

- 24 hours after resolution of fever without antipyretics
- After symptoms have improved ¶

AND

- You have been cleared by SH.

Show clearance to school/Dean.

Non-clinical students, regardless of vaccination status, previous infection, or lack of symptoms

Return to campus:

- Stay home for 7 days.
- Isolation can end after day 7 if asymptomatic or resolving and a negative ***test on day 7 or later
- No test, isolate for 10 days
- If **severe/critical illness or severely immunocompromised isolate 20 days from onset of symptoms OR 2 SARS-COV-2 tests collected >=24 hours apart) ***
- If fever persists, isolation continues until fever resolves.
- If symptoms, other than fever, persist isolate until symptoms are resolving or until after day 10
- Wear a well-fitting mask for 10 days
- Must be cleared by SH
- Provide clearance to School/Dean

SH= COVID19_Student_Health@llu.edu or 909-558-8770

* See exposure algorithm "Exposure/Quarantine Guidance (For All Students)"

<https://home.llu.edu/campus-and-spiritual-life/student-health-service/covid-19-student-guidelines>

** Illness severity defines as: <https://www.cdc.gov/coronavirus/2019-ncov/need-extra-precautions/people-with-medical-conditions.html>

*** Antigen test preferred

¶ If symptomatic and have a negative antigen test, it is recommended that you follow-up with a PCR test