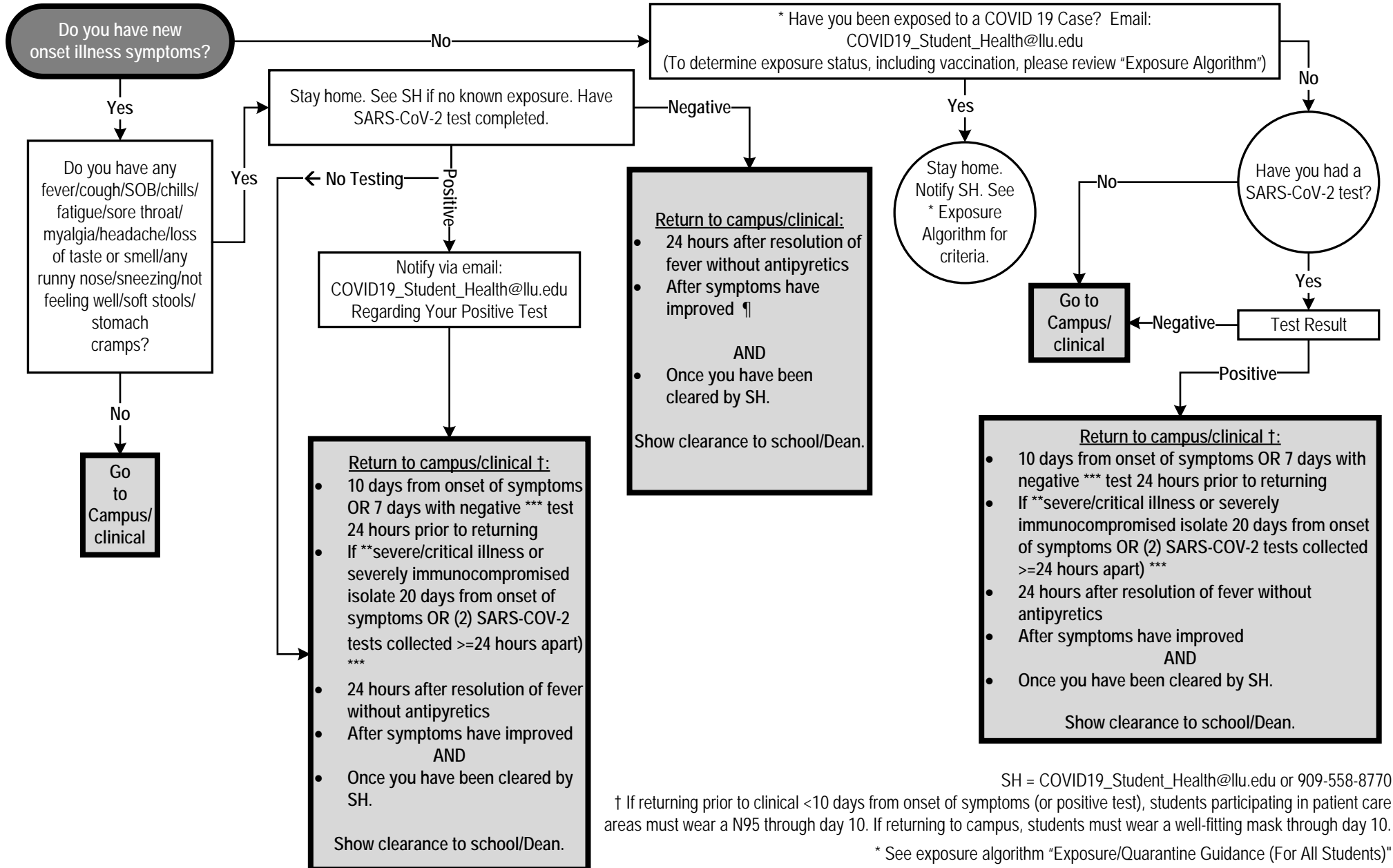


## BOOSTED/VACCINATED – CLINICAL STUDENTS

### LLU STUDENT RETURN-TO-CAMPUS/CLINICAL CRITERIA (ALL SITES) – UPDATED FEBRUARY 3, 2022 (vs. 3.1)

#### SYMPTOMS, EXPOSURES, & TESTING



¶ If symptomatic and have a negative antigen test, it is recommended that you follow-up with a PCR test

\*\* Illness severity defines as: <https://www.cdc.gov/coronavirus/2019-ncov/need-extra-precautions/people-with-medical-conditions.html>

\*\*\* Either Antigen test or NAAT can be used

SH = COVID19\_Student\_Health@llu.edu or 909-558-8770  
 † If returning prior to clinical <10 days from onset of symptoms (or positive test), students participating in patient care areas must wear a N95 through day 10. If returning to campus, students must wear a well-fitting mask through day 10.

\* See exposure algorithm "Exposure/Quarantine Guidance (For All Students)" <https://home.llu.edu/campus-and-spiritual-life/student-health-service/covid-19-student-guidelines>