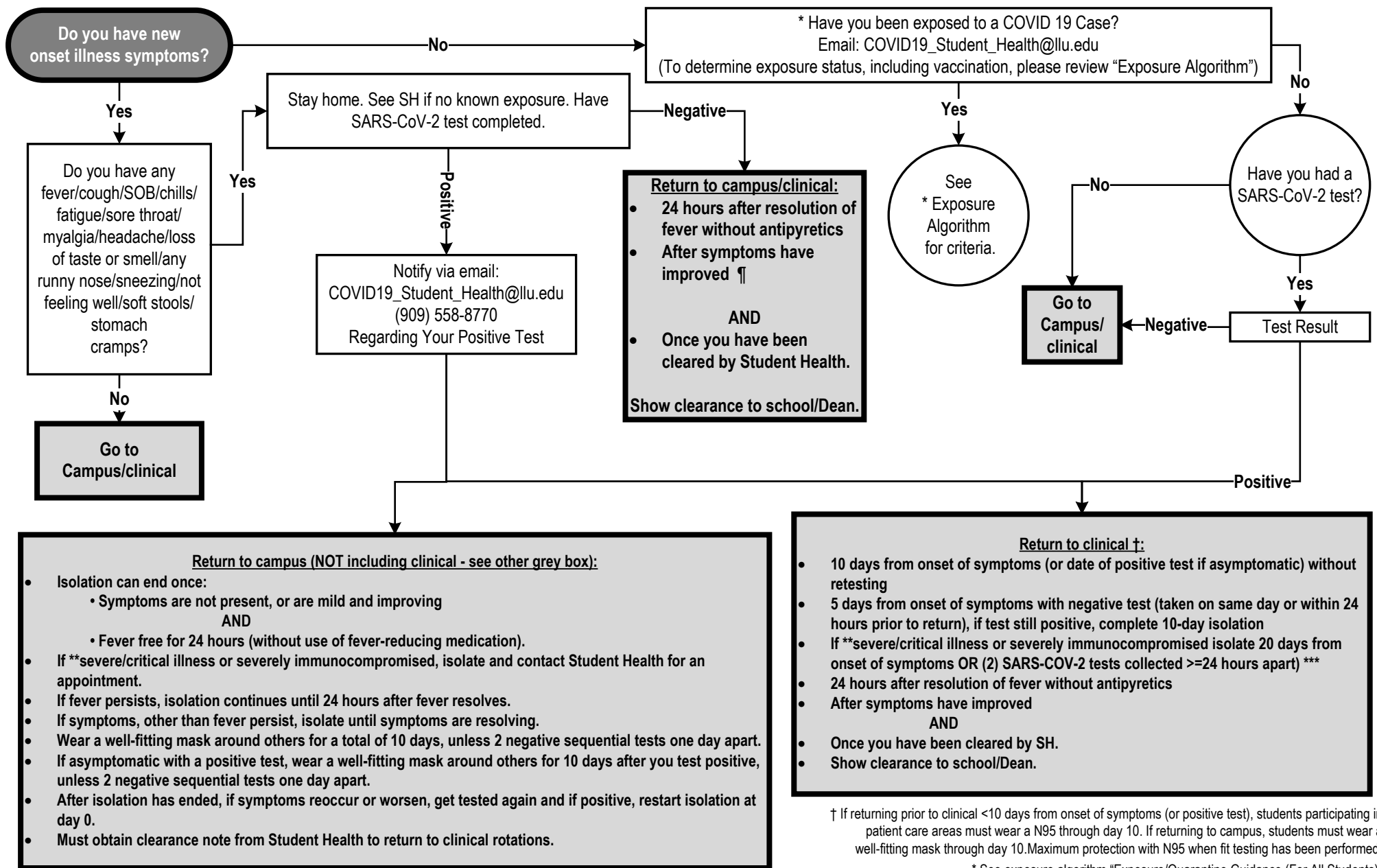


CLINICAL STUDENTS

LLU STUDENT RETURN-TO-CAMPUS/CLINICAL CRITERIA (ALL SITES) – UPDATED JANUARY 2024 (vs. 5)

SYMPTOMS, EXPOSURES, & TESTING



†† If symptomatic and have a negative antigen test, it is recommended that you follow-up with a PCR test

** Illness severity defines as: <https://www.cdc.gov/coronavirus/2019-ncov/need-extra-precautions/people-with-medical-conditions.html>

† See exposure algorithm "Exposure/Quarantine Guidance (For All Students)" <https://home.llu.edu/campus-and-spiritual-life/student-health-service/covid-19-student-guidelines>

*** Either Antigen test or NAAT can be used